



origin
DOORS AND WINDOWS

OS-44 & OS-77 Specification File



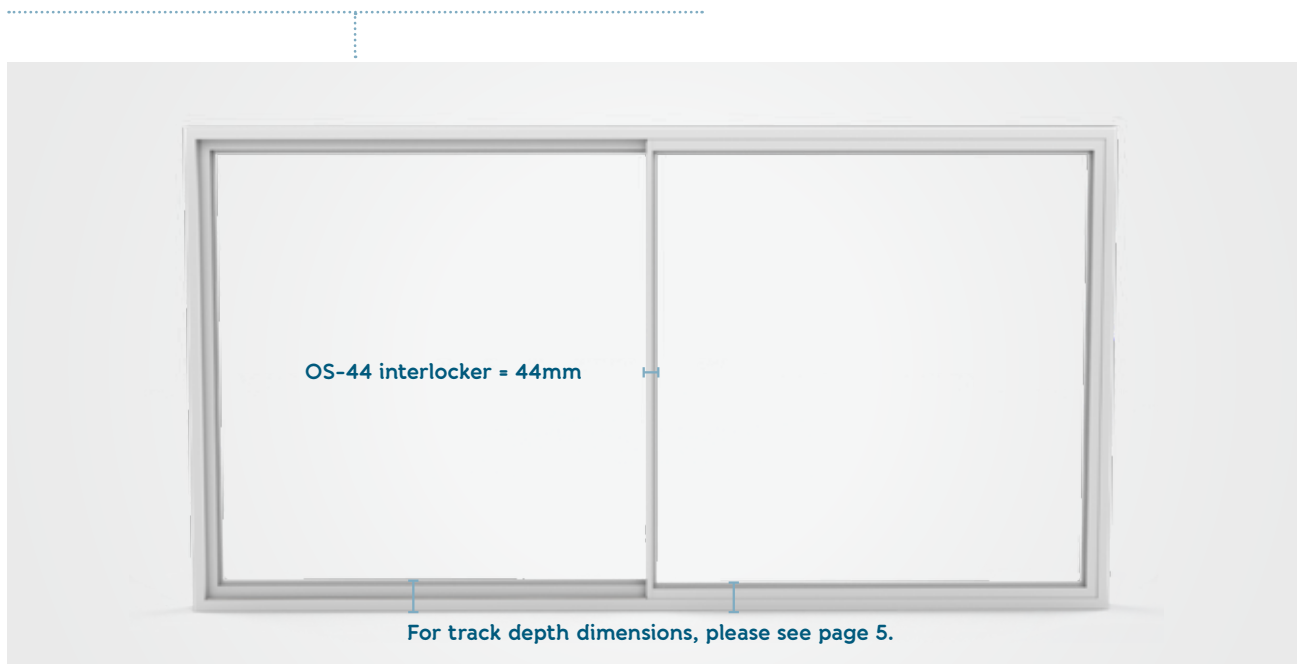
Contents

Specification Overview	04
Security	07
Optional Extras	08
Inline Slider Make-Up	09
Performance and Limitations	10
Size Limitations	11
Master Configurations	13
Technical Drawings	18
Handles	31
Gaskets	33
All Configurations	34
Installation Guide	35
Accreditations	41

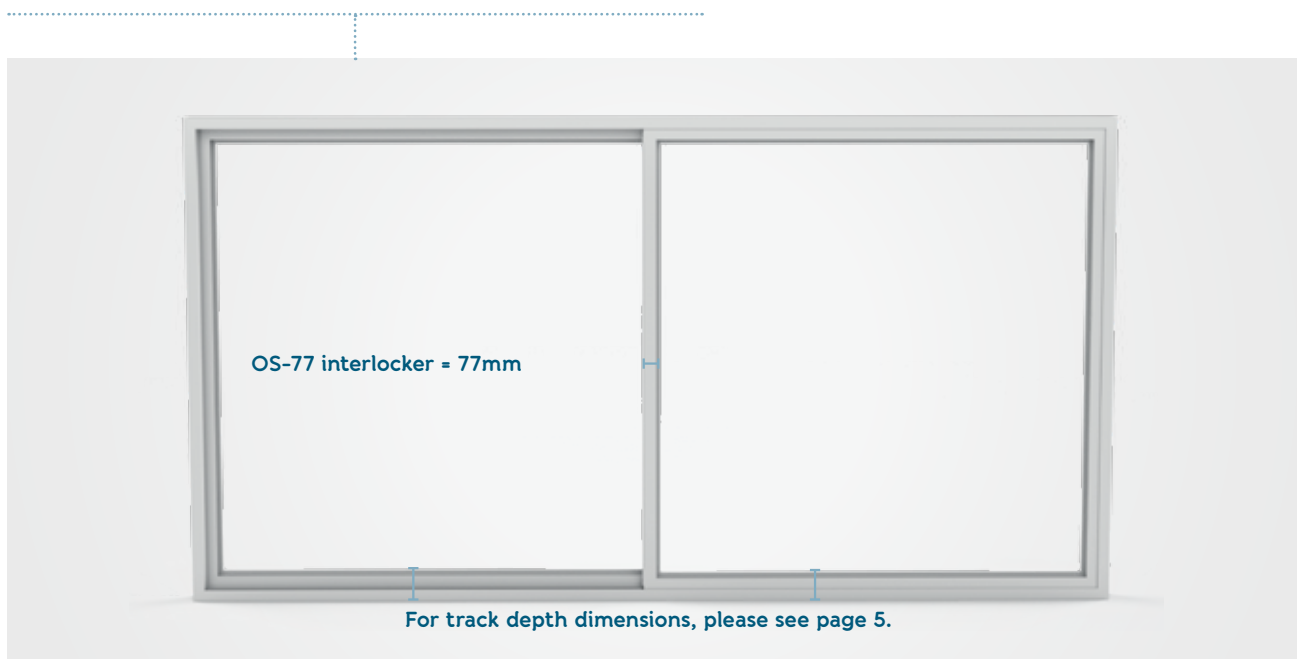
Specification Overview

Thermally Broken Aluminium Inline Slider

External view of the OS-44



External view of the OS-77



Profile specification

Frame Depth	2 options: 143mm (double track) and 213mm (triple track)
Sightline	44mm and 77mm
Track Height	50mm (double and triple track)
Maximum Individual Sash Size	2000mm wide x 2218mm tall* <i>*individual panels cannot exceed 6sqm</i>
Minimum Individual Panel Size	895mm wide x 2074mm tall
Maximum Sash Weight	200kg

Features

- ▶ Up to a 20-year guarantee including gaskets and seals*
- ▶ PAS 24 certified**
- ▶ Concealed running gear and track
- ▶ Square beading
- ▶ Weather testing BS6375 part 1 certified

Glazing options

- ▶ Dry glazed system with either a 32mm or 36mm glass unit.

Options and extras

- ▶ Up to 3 panelled configurations - these can be all sliding or a combination of fixed and sliding
- ▶ Available in 4 attractive colours; 7015M, 7016M, 9005M, 9910G and bespoke RAL's
- ▶ 225mm cill available for double track configurations
- ▶ Two handle options - either an all-in-one with bar and lock or a bar handle with separate locking
- ▶ 60mm drip bar option
- ▶ Trickle vent option

*Guarantee based on location of where the doors will be installed.

Full terms and conditions can be found on the Origin website - origin-global.com/terms-and-conditions.

**PAS 24 only available on the OS-77

The Origin Patio Slider has 4 popular colours which are available on a 4-week lead time...



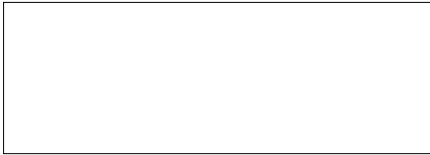
Anthracite Grey (7016M)



Jet Black (9005M)



Slate Grey (7015M)



Hipca White (9910G)



Outside of this, the Origin Patio Slider can be specified in any RAL colour. These will be available in 6-weeks.

For the full range, visit origin-global.com

Even the gasket colour and drainage cap colour is your choice...

	Door Colour	Recommended Gasket Colour	Recommended Drainage Cap Colour
A.	7015M	Slate Grey	Dark Grey
A.	9007M	Slate Grey	Cement Grey
B.	7016M	Anthracite Grey	Dark Grey
C.	9005M	Black	Black
C.	7021M	Black	Dark Grey
D.	9910G	White	White



Dual colour and woodgrain options are not available.

Security

Multi-Point Lock

Each door is equipped with an ultra-secure multi-point locking system, with 6 points of locking, including 4 hook keeps and 2 additional shootbolts.



Accessories and Optional Extras

Handles

- ▶ Stainless steel 500mm bar handle with separate locking
- ▶ An all-in-one 300mm handle with integrated locking



500mm offset handles



300mm All-in-One handle

Cills

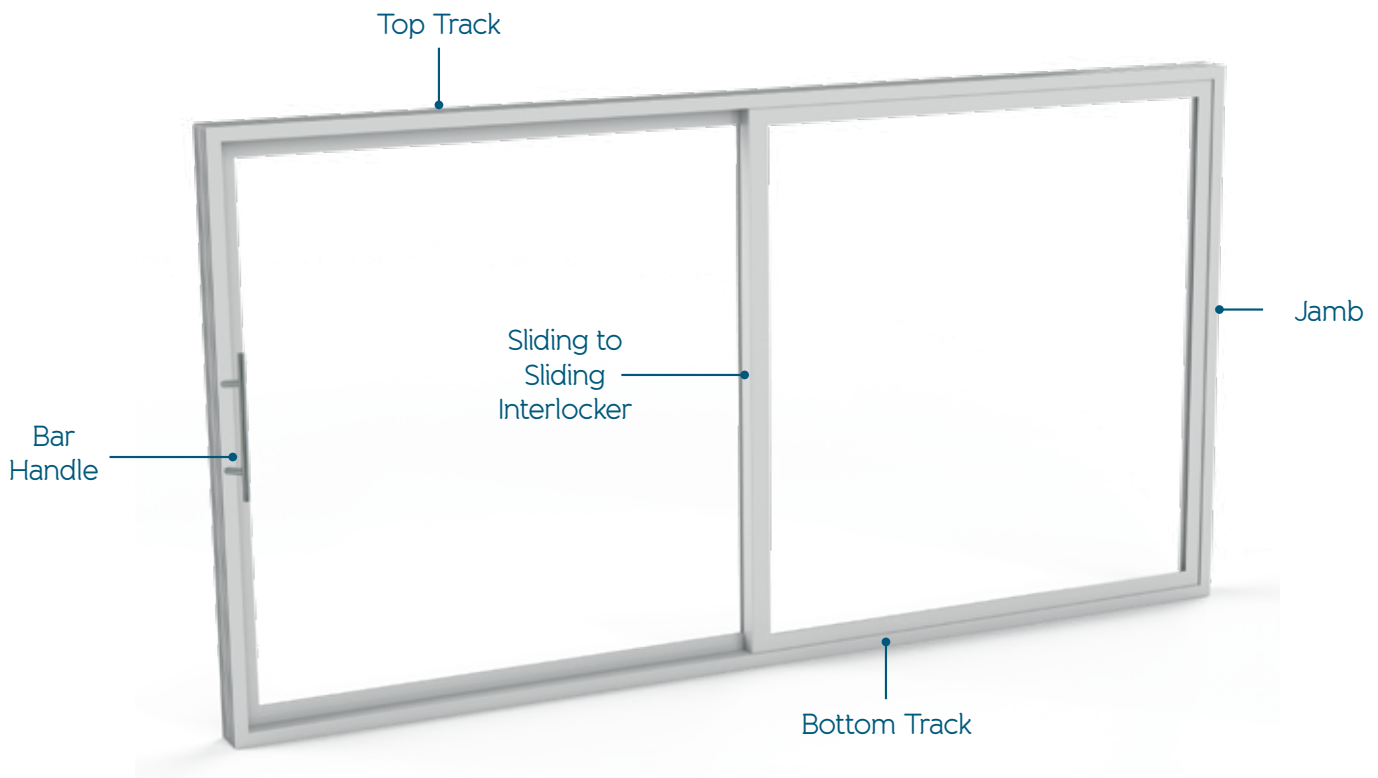
A 225mm cill option is available in the following colours; 7015M, 7016M, 9005M and 9910G.



Drip Bar

A 60mm drip bar is also available.

Patio Slider Make-Up



Make-up is dependent on the configuration chosen.

Performance and Limitations

Thermal Ratings

U-Value	1.2W/m ² K
---------	-----------------------

Weather Rating

Air Permeability	Class 3
------------------	---------

Water Tightness	Class 6a
-----------------	----------

Resistance to Wind Load	1600Pa
-------------------------	--------

Exposure Category	1000
-------------------	------

Building Regulation Requirements

New Build
and Extensions 2.0 W/ (m²K)

Replacements	1.8 W/ (m ² K)
--------------	---------------------------

Energy Rating	E or better
---------------	-------------

All doors must conform to
these requirements

Performance Testing

BS6375 Part 1 Certified	PAS 24
-------------------------	--------

Accreditation

ISO 9001

Thermal Performance

Glass Type

Planitherm Total+ (1.2 Centre Pane, 90% Argon, swisspacer ultimate)	1.8 W/m ² K
--	------------------------

Planitherm 4s II (1.0 Centre Pane, 90% Argon, swisspacer ultimate)	1.6 W/m ² K
---	------------------------

2 X Planitherm 4s II (0.8 Centre Pane, 90% Argon, swisspacer ultimate)	1.4 W/m ² K
---	------------------------

2 X Planitherm 4s II (0.5 Centre Pane, 90% Krypton, swisspacer ultimate)	1.2 W/m ² K
---	------------------------

Size Limitations

Slider Set Limits

Width (mm)	OS-44 & OS-77		OS-20	
	Min	Max	Min	Max
XO or OX (1 Sliding, 1 Fixed)	1800	4010	1228	4428
XX (2 Sliding)	1800	4010	1278	4478
XXO or OXX (2 Sliding, 1 Fixed)	2984	5939	1774	6574
XXX (3 Sliding)	2984	5939	1824	6624
OXXO (2 Sliding, 2 Fixed)	N/A	N/A	2405	8804
XXXX (4 Sliding)	N/A	N/A	2505	8904
OXXXXO (4 Sliding, 2 Fixed)	N/A	N/A	3497	13096
XXXXXX (6 Sliding)	N/A	N/A	3597	13196

Size Limitations

Maximum individual panel size:

2000mm wide x 2218mm tall*

**individual panels cannot exceed 6sqm.*

Minimum individual panel size:

895mm wide x 2074mm tall

Max sash weight:

200kg

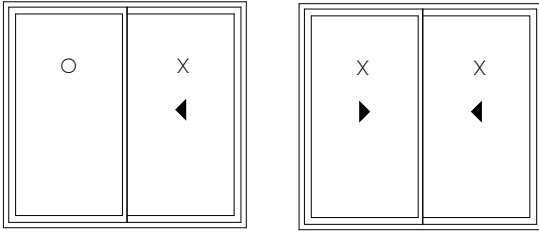
Minimum set height: 2005mm

Maximum set height: 2600mm

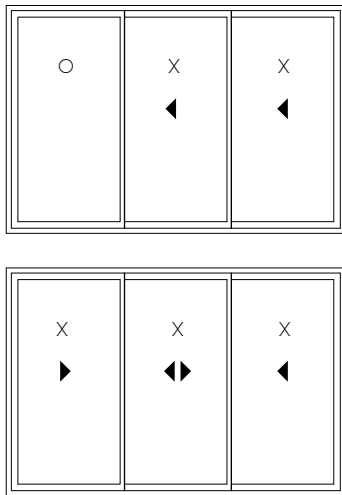


Master Configurations

OX (1 fixed, 1 sliding) or XX (2 sliding)



OXX (1 fixed, 2 sliding) or XXX (3 sliding)



KEY

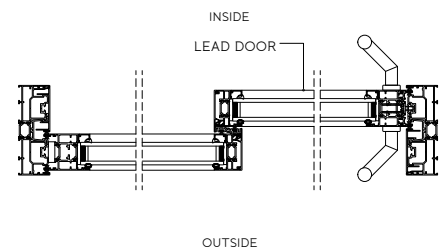
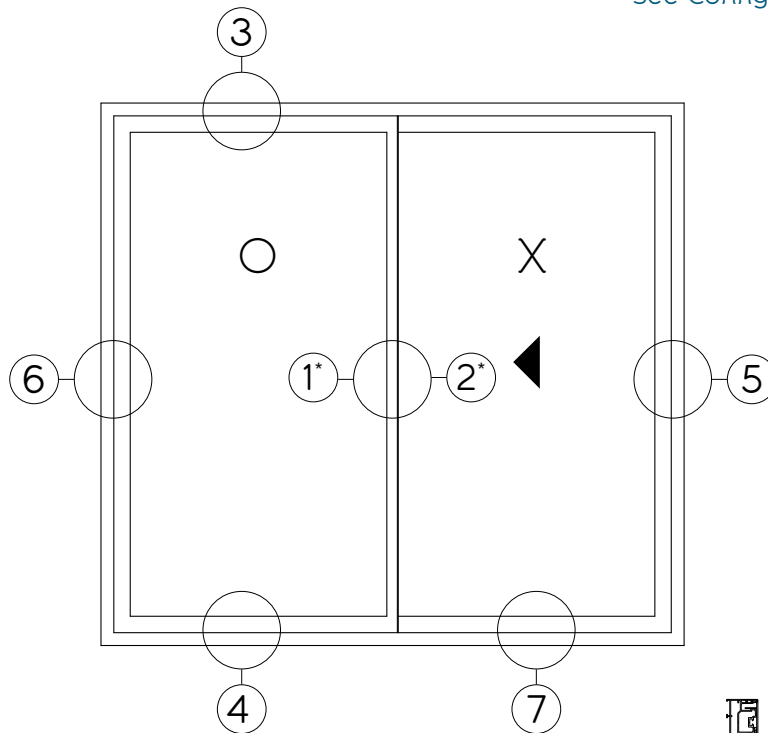
O - Indicates Fixed sash

X - Indicates Opening sash

Arrow - Indicates opening direction

Master Configuration: XO (1 sliding, 1 fixed) or XX (2 sliding)

See Configuration Key for section detail ►



*Either the standard (77mm) or slim (44mm) interlock will be supplied dependent on the system chosen.



2+0

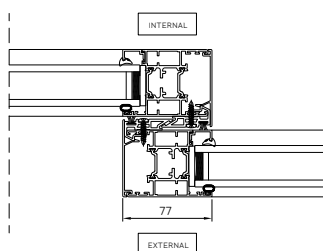
See page 10 for configurations

Key features

- Both panels can be sliding, or one can be fixed with one sliding
- Traditional patio door style

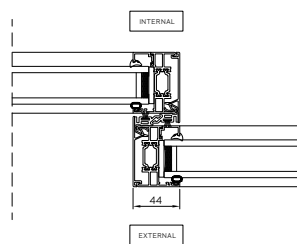
Configuration Key

1 - Standard Interlock



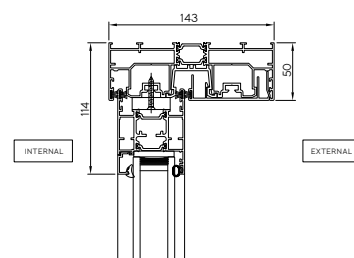
See page 16

2 - Slim Interlock



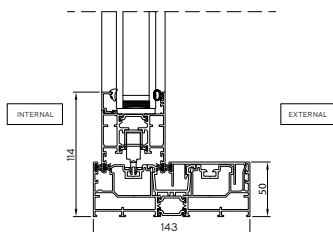
See page 17

3 - Double Frame - Top Track



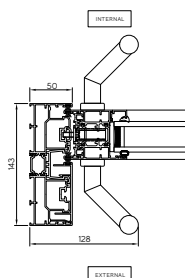
See page 18

4 - Double Frame - Bottom Threshold



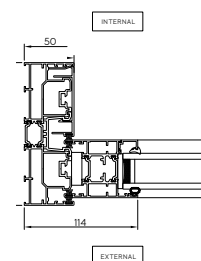
See page 19

5 - Double Frame - Locking Jamb



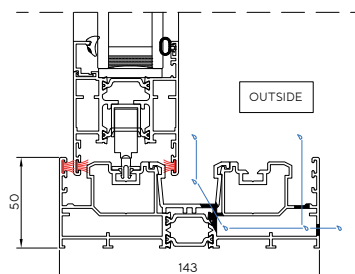
See page 20

6 - Double Frame - Fixed Jamb



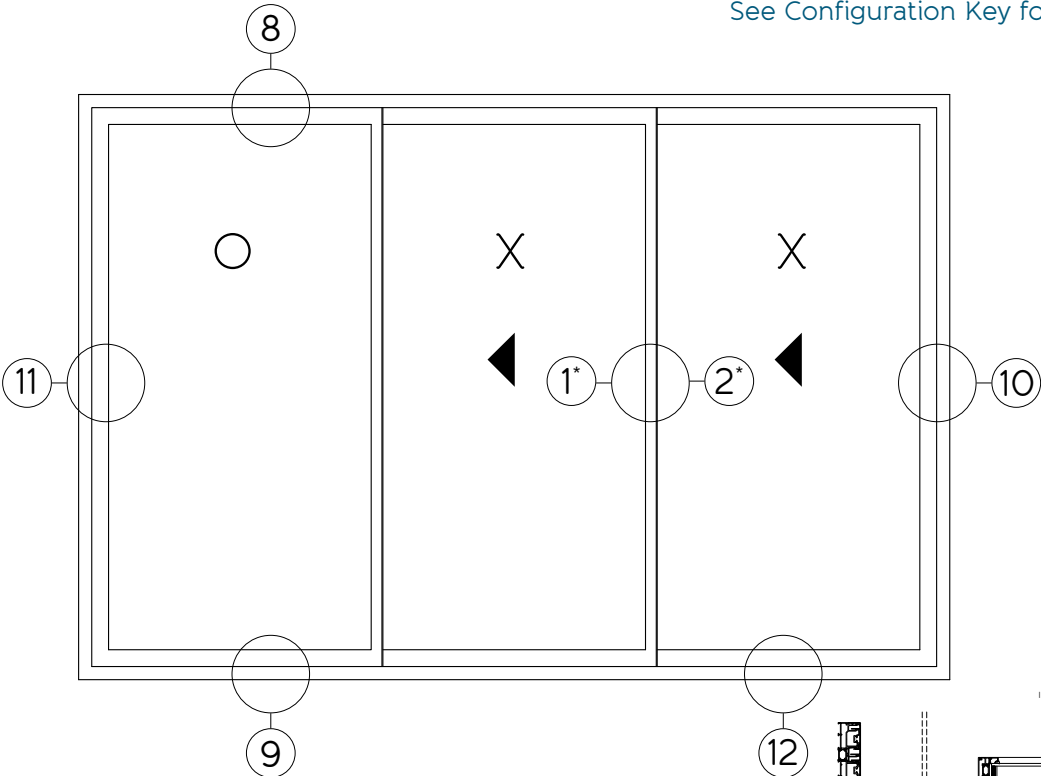
See page 21

7 - Double Frame - Drainage Frame



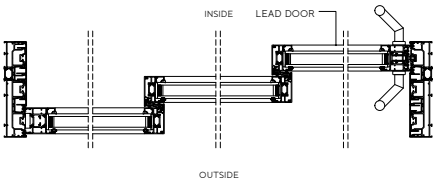
See page 22

Master Configuration: OXX (1 fixed, 2 sliding) or XXX (3 sliding)



See Configuration Key for section detail ▶

*Either the standard (77mm) or slim (44mm) interlock will be supplied dependent on the system chosen.



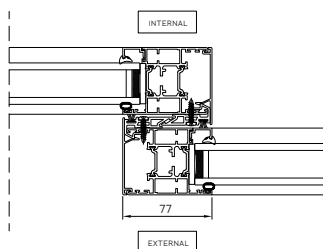
Key features

- ▶ Fixed pane can be specified on the left or right

See page 11 for configurations

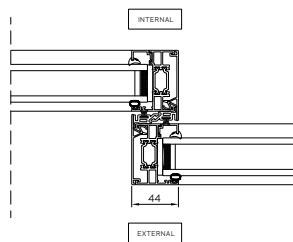
Configuration Key

1 - Standard Interlock



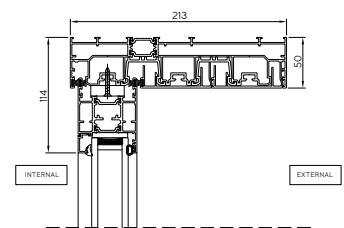
See page 16

2 - Slim Interlock



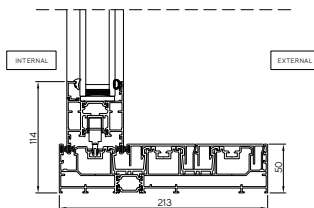
See page 17

8 - Triple Frame - Top Track



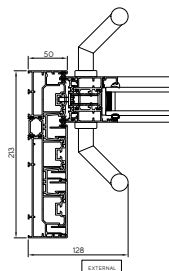
See page 23

9 - Triple Frame - Bottom Threshold



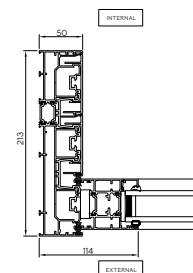
See page 24

10 - Triple Frame - Locking Jamb



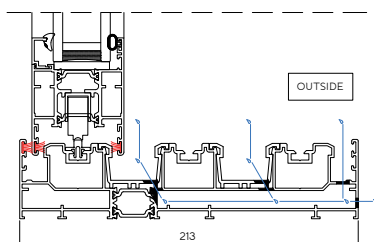
See page 25

11 - Triple Frame - Fixed Jamb



See page 26

12 - Triple Frame - Drainage Details

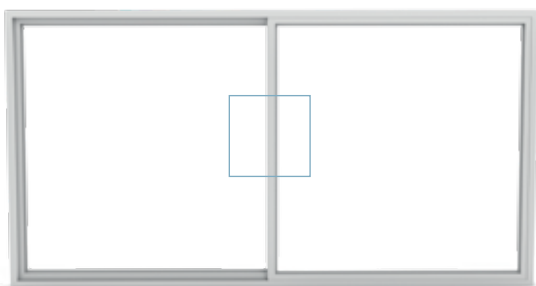
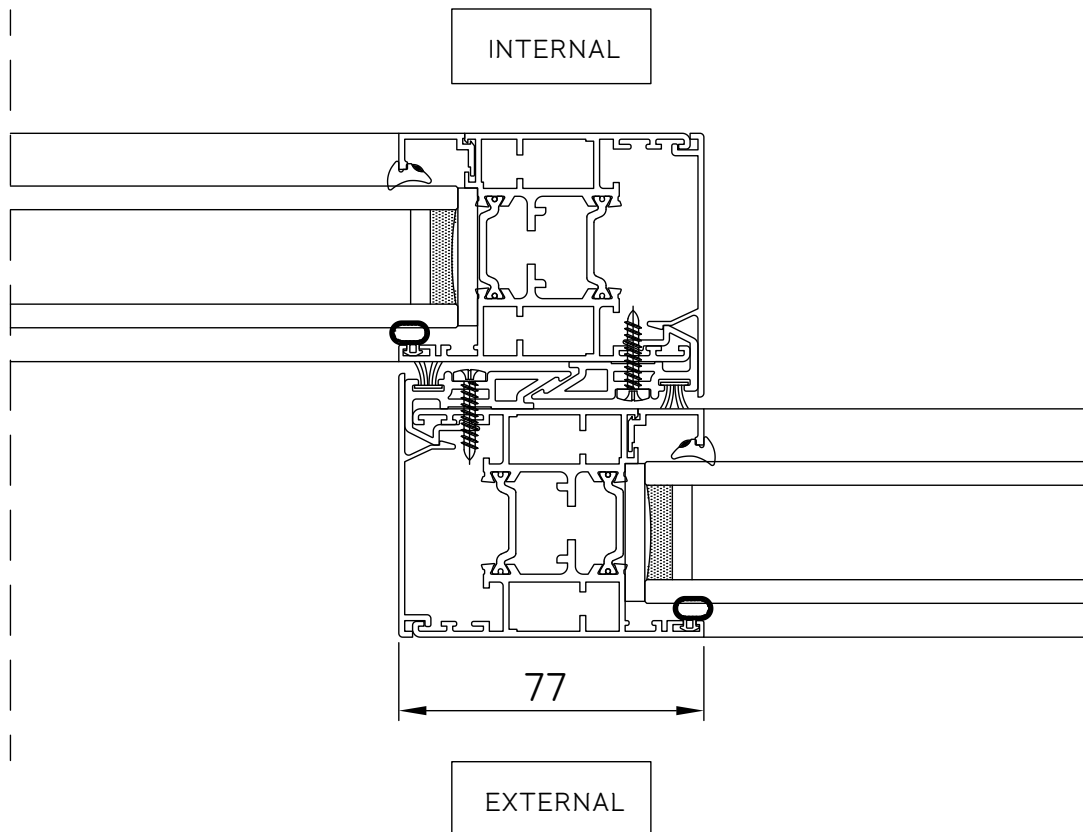


See page 27

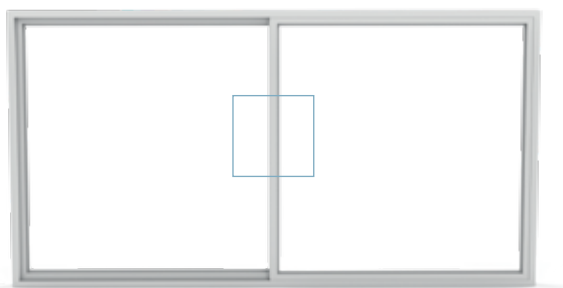
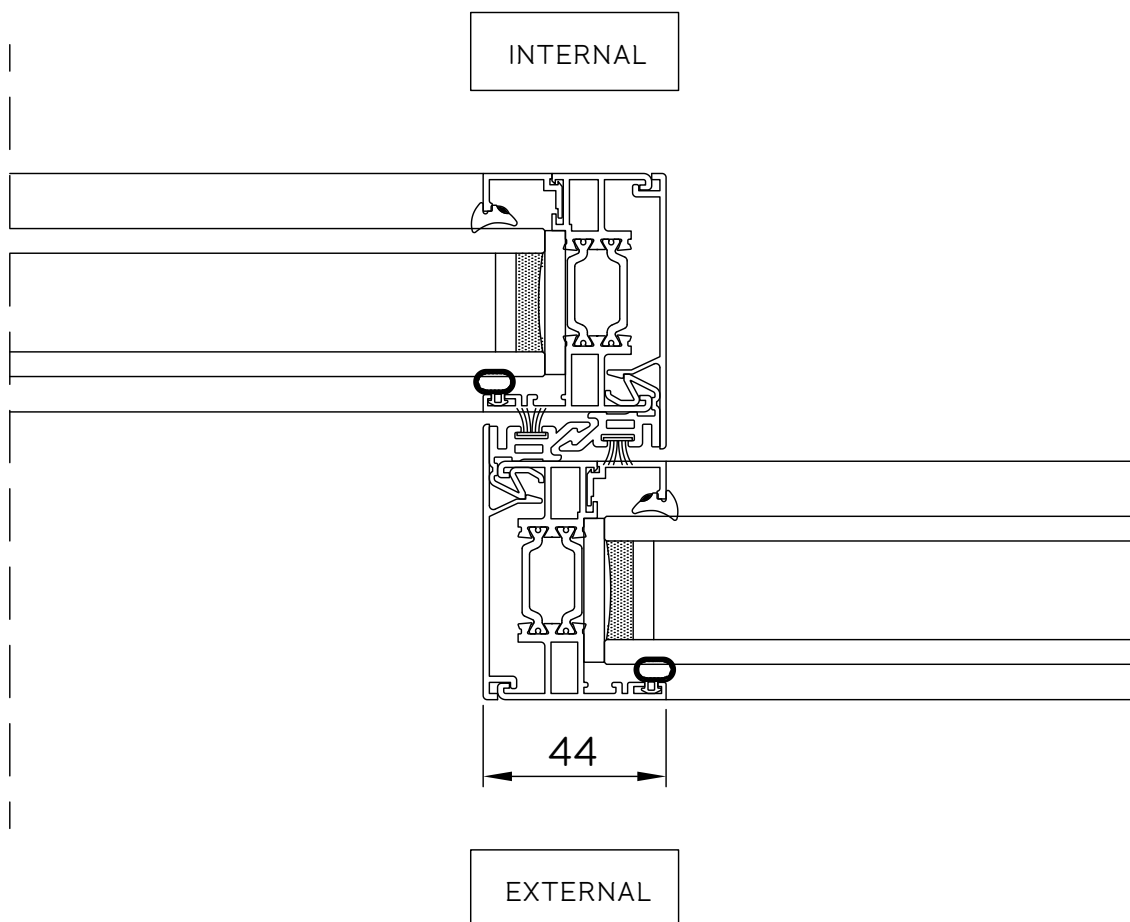
Technical Drawings

1

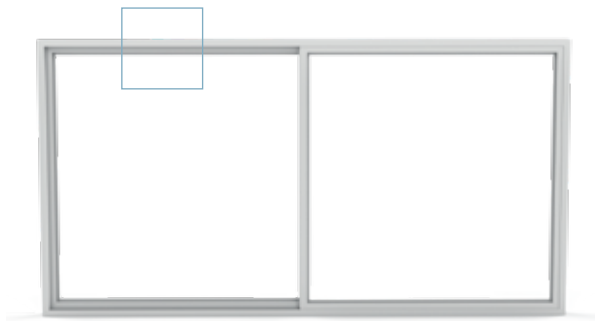
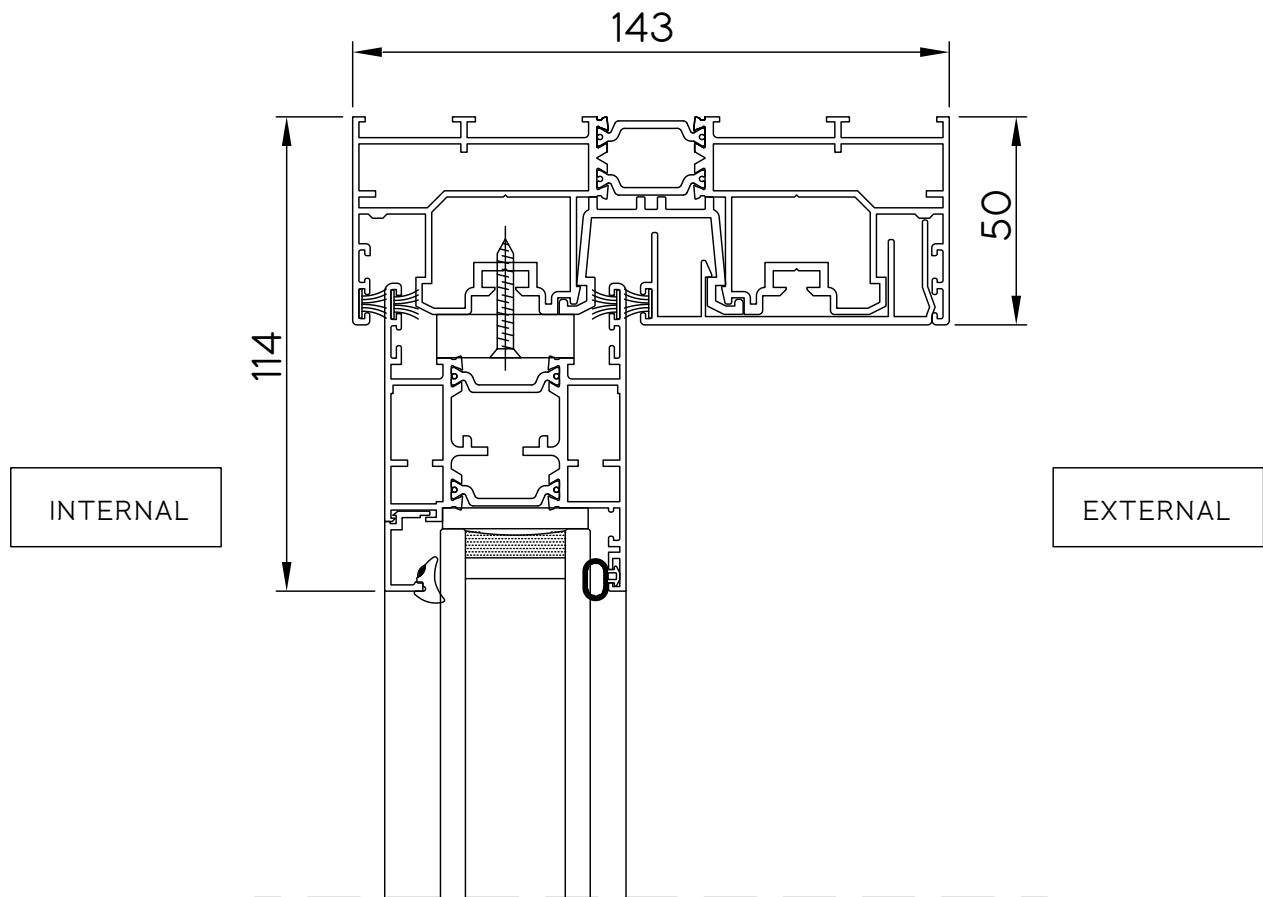
Standard Interlock



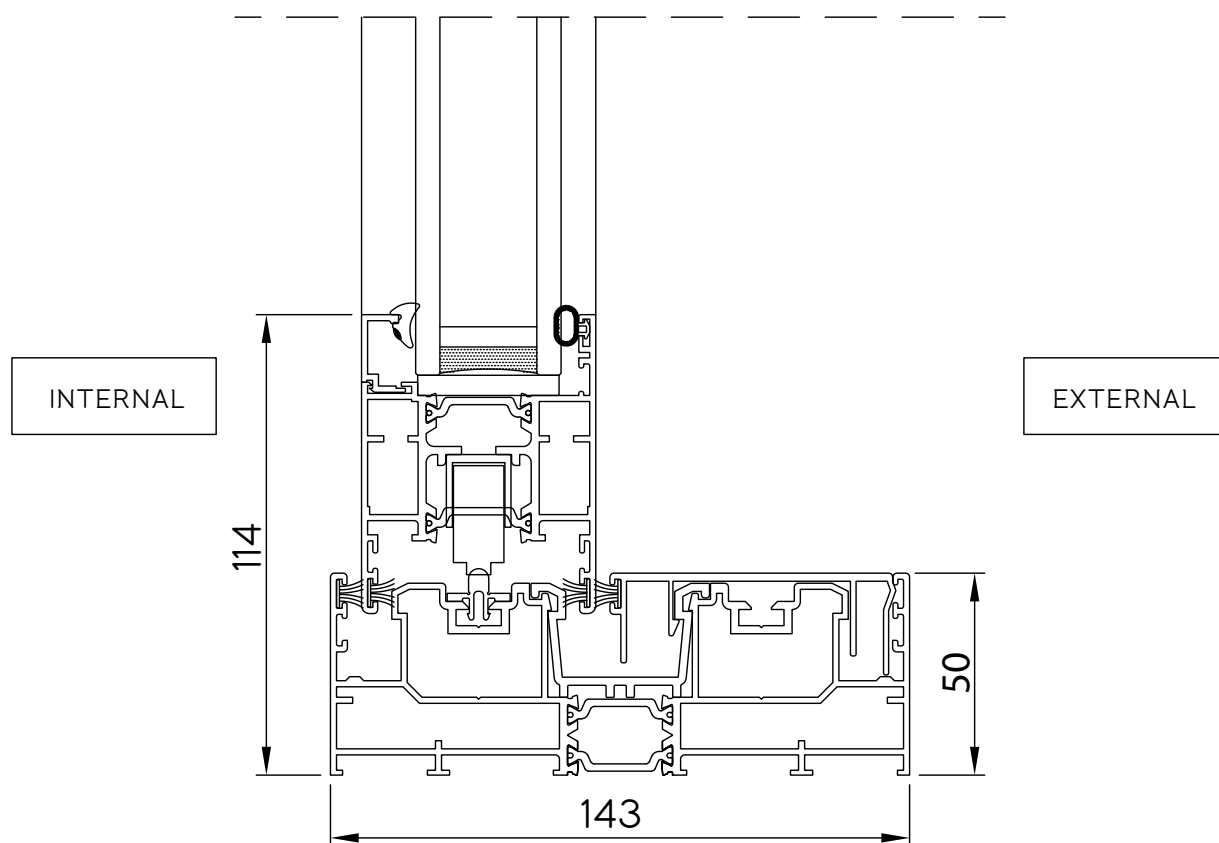
2 Slim Interlock



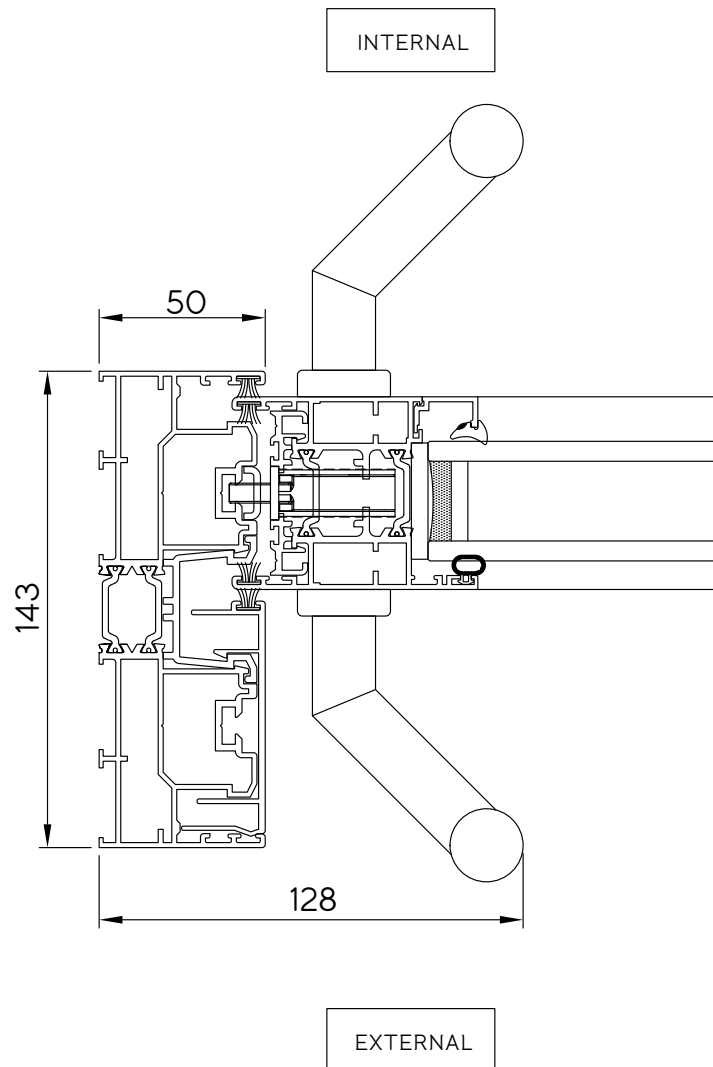
3 Double Frame - Top Track



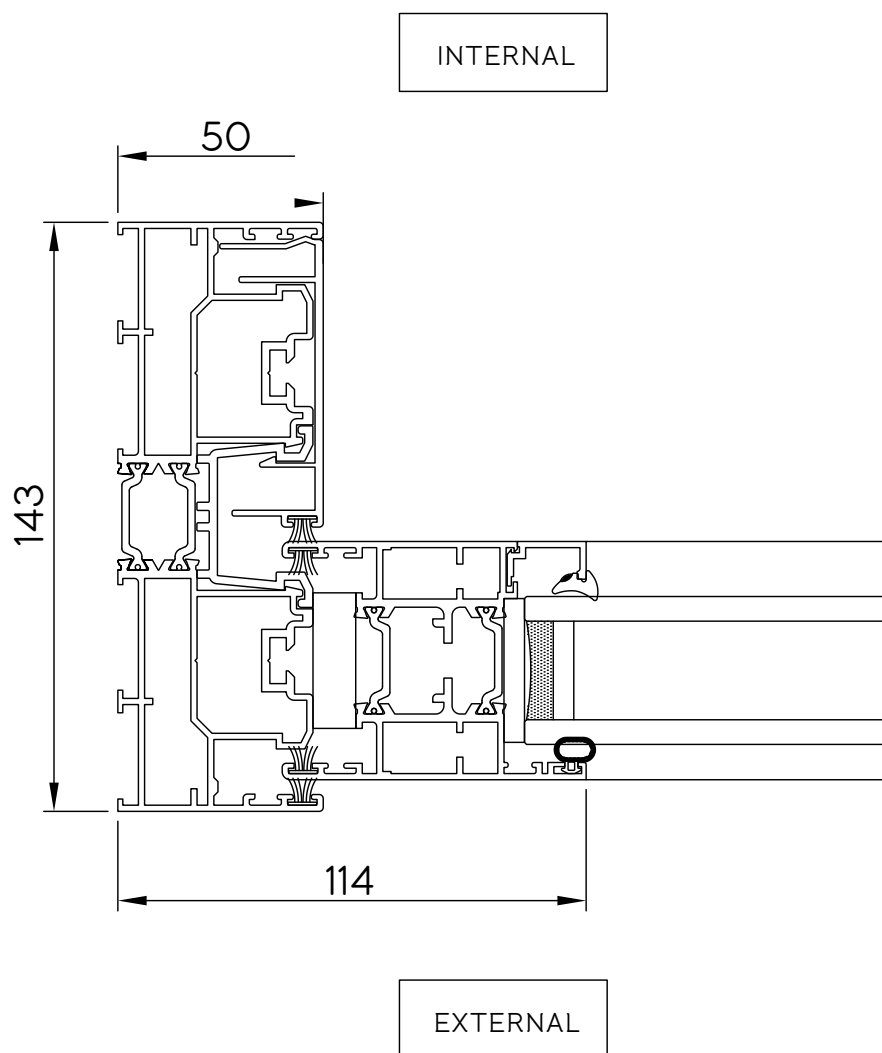
4 Double Frame - Bottom Threshold



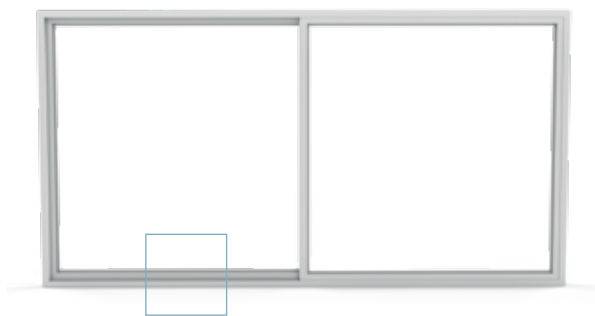
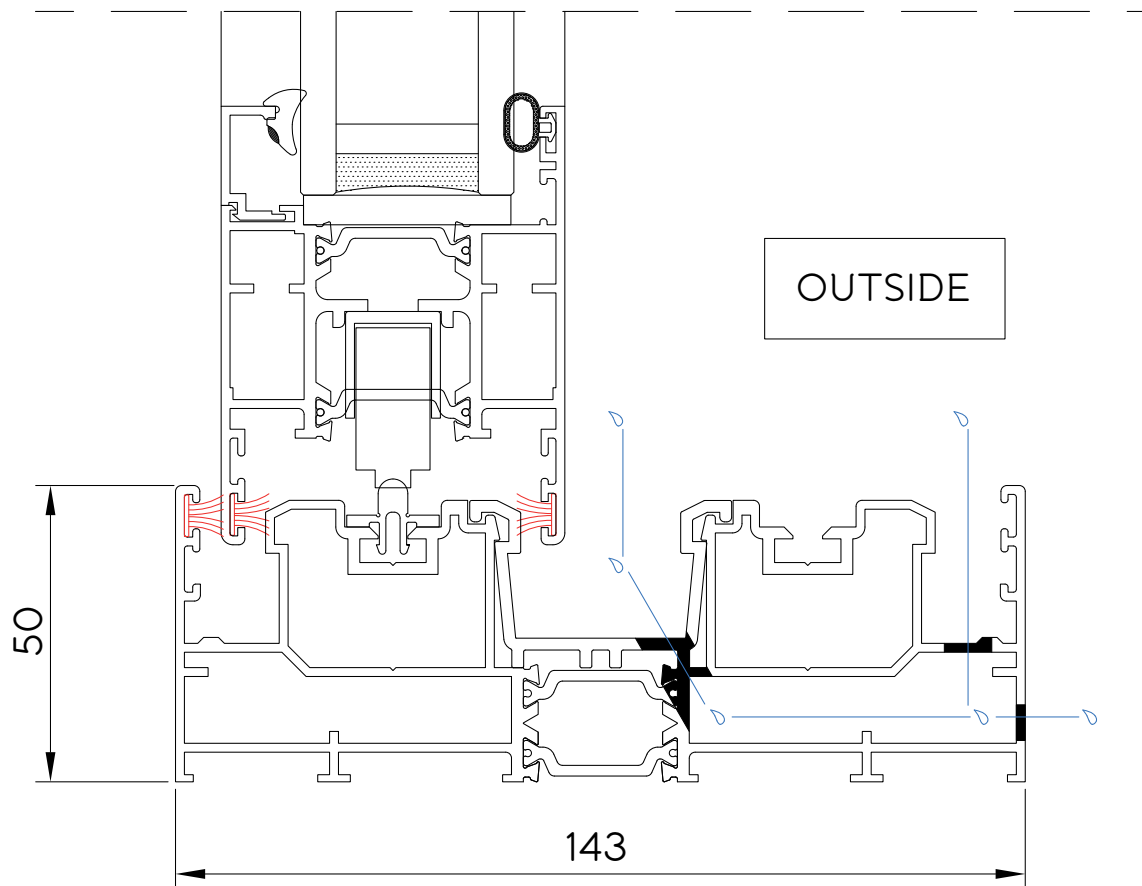
5 Double Frame - Locking Jamb



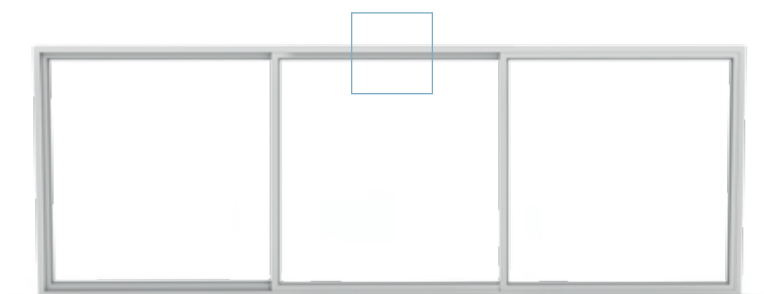
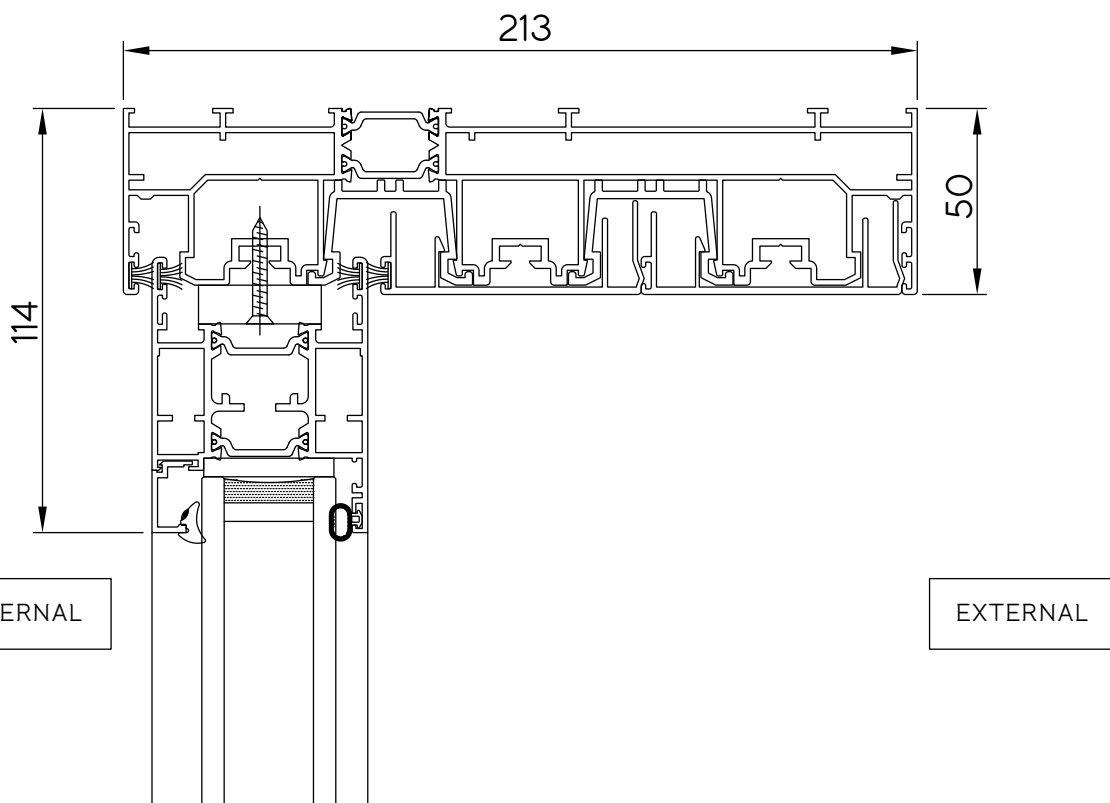
6 Double Frame - Fixed Jamb



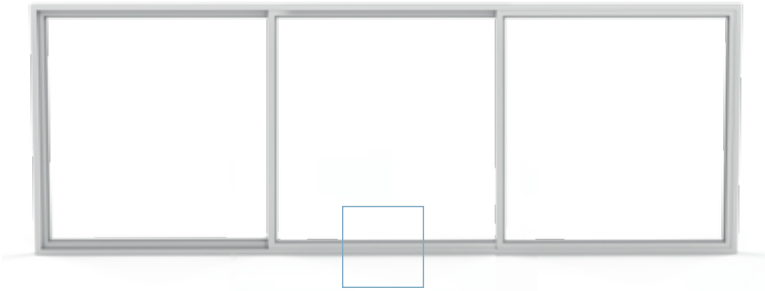
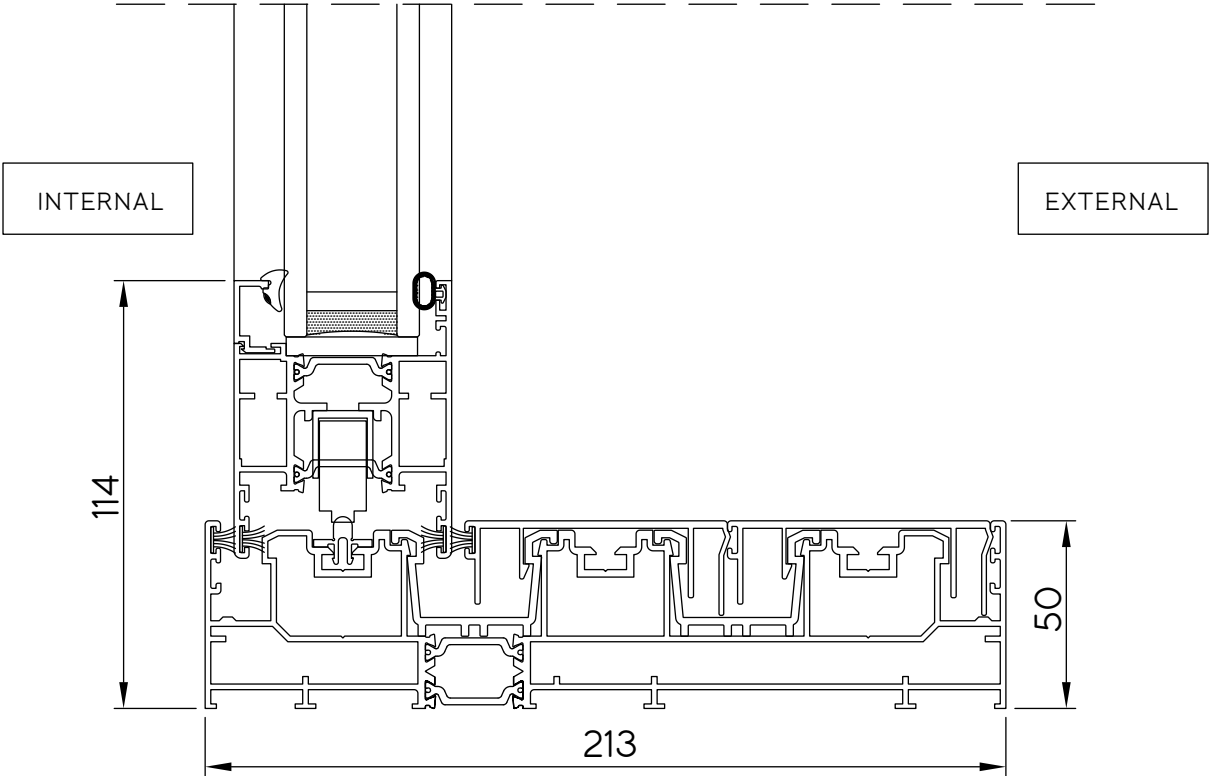
7 Double Frame - Drainage Details



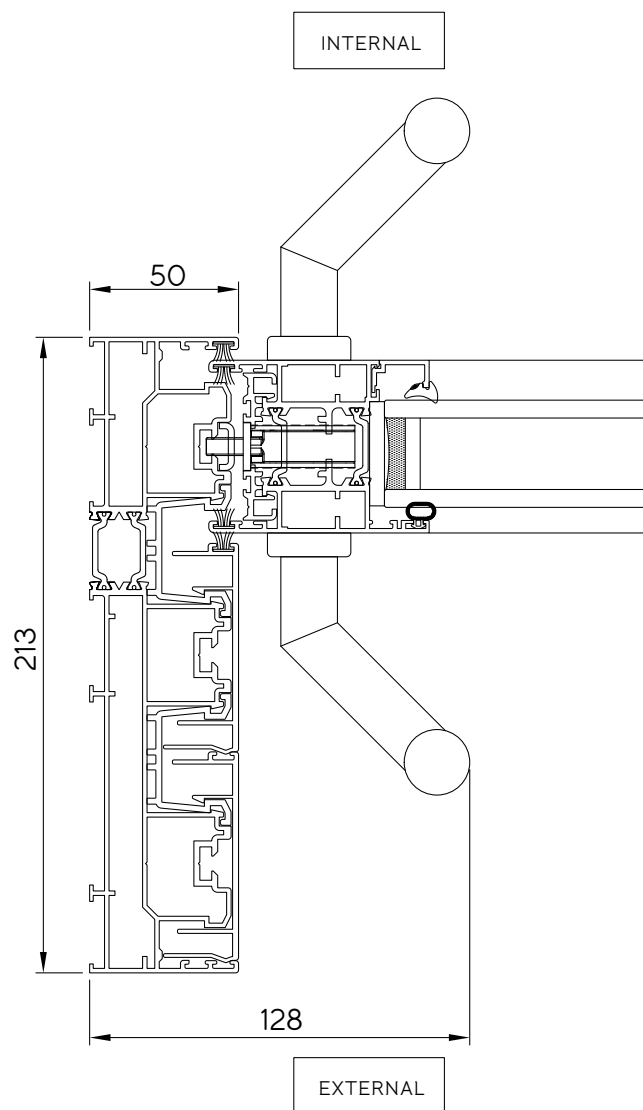
8 Triple Frame - Top Track



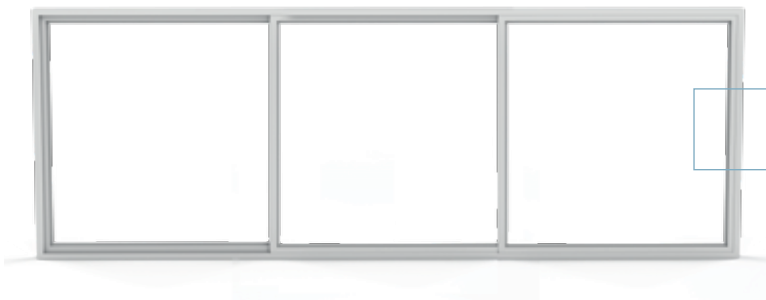
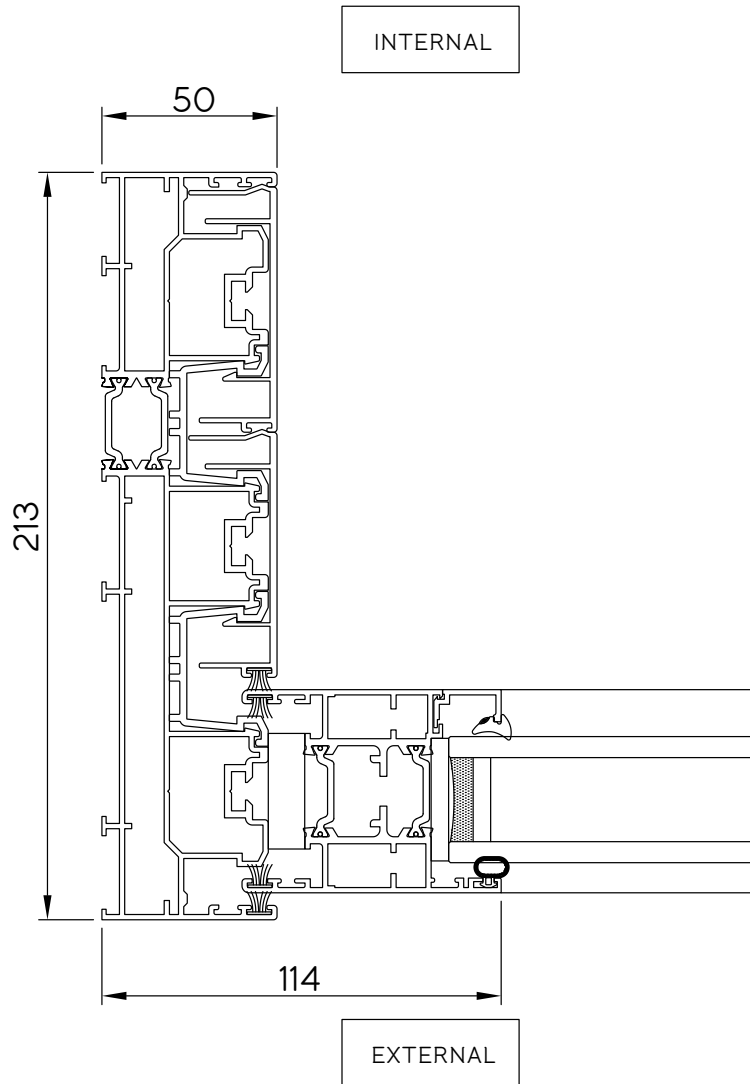
9 Triple Frame - Bottom Threshold



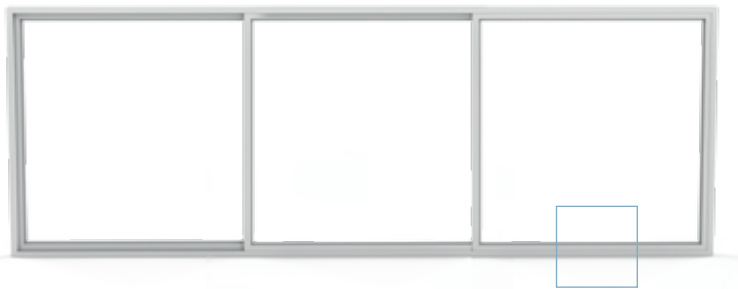
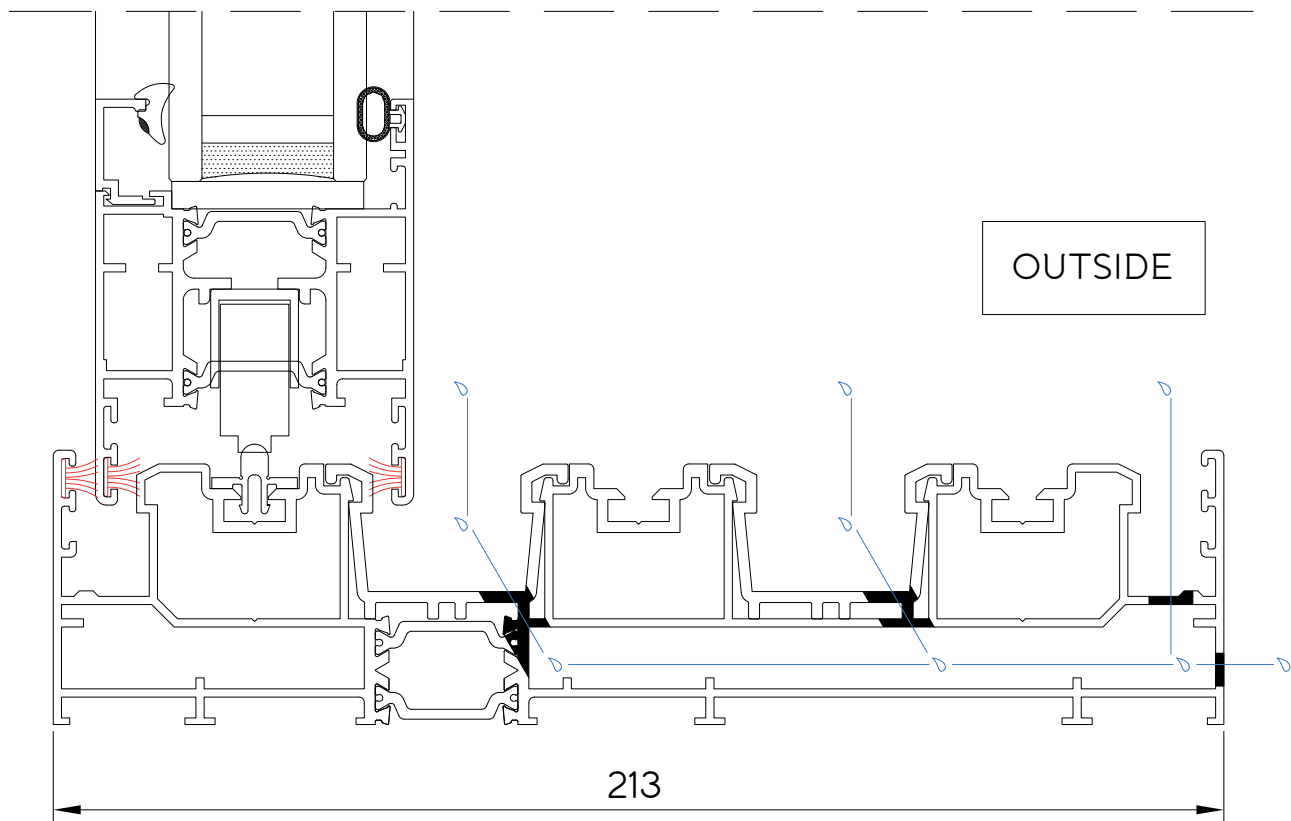
10 Triple Frame - Locking Jamb



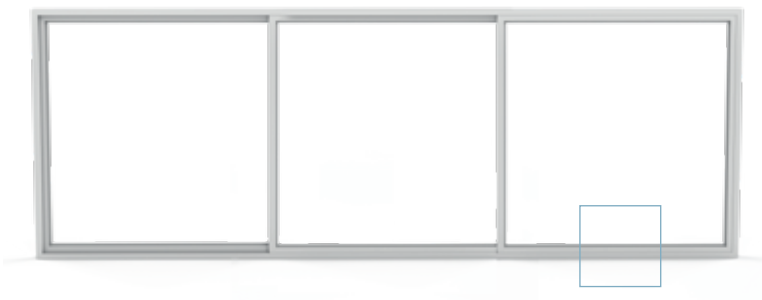
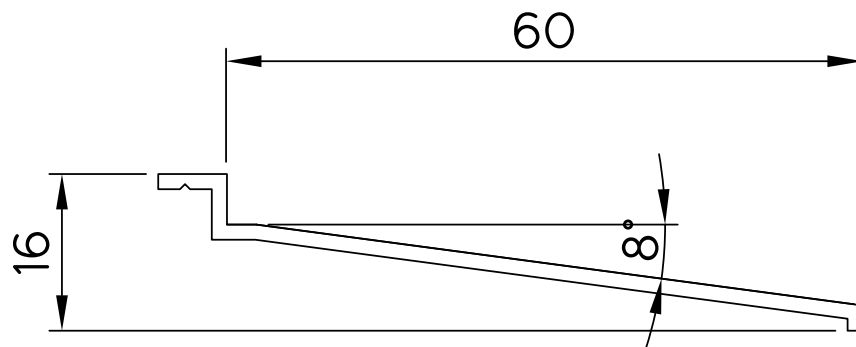
11 Triple Frame - Fixed Jamb



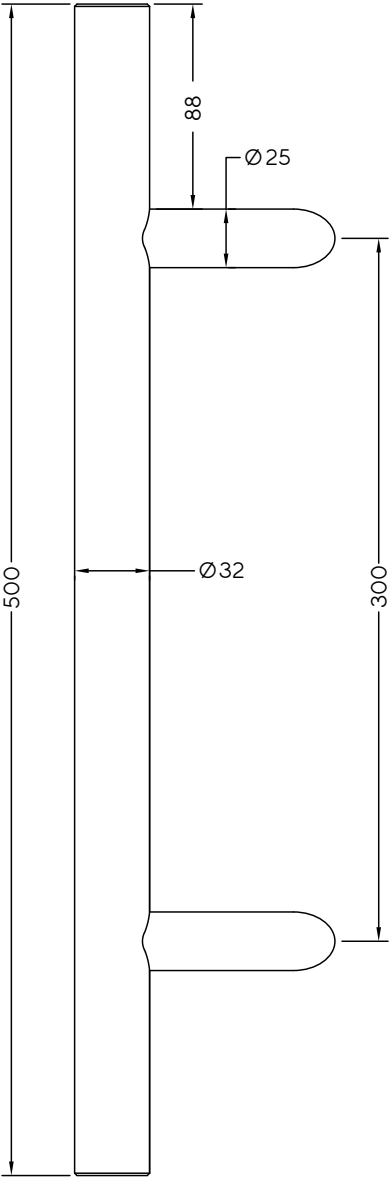
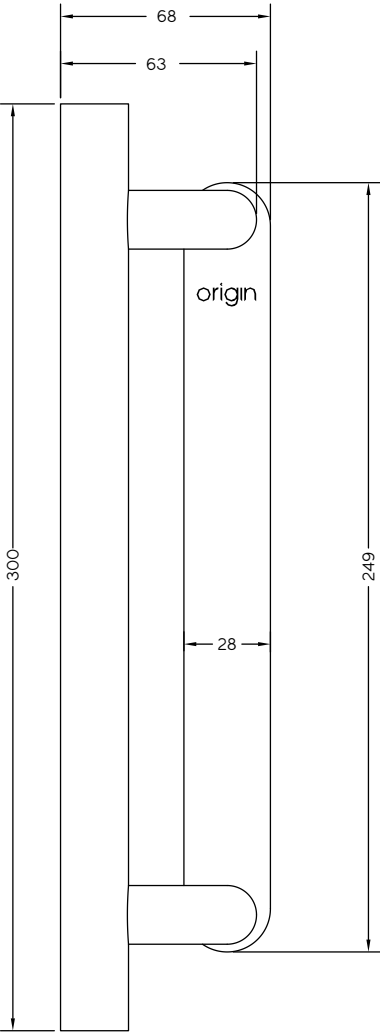
12 Triple Frame - Drainage Details



13 Drip Bar (optional extra)

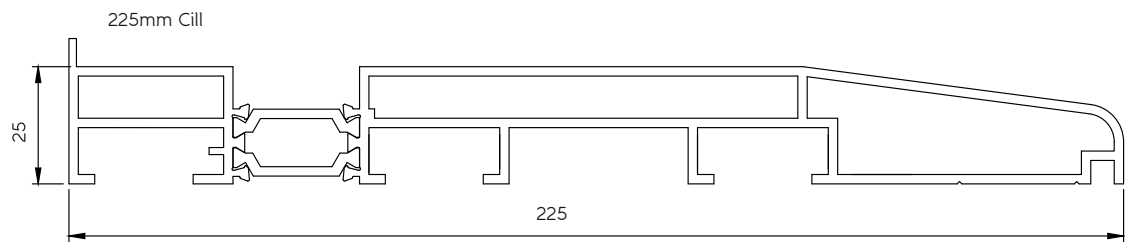


14 Handles



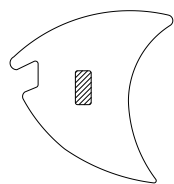
15

225mm Cill

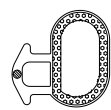


Gaskets

Wedge Gasket Part No.
W473P (G00037)



Rebate Gasket Part No.
B2018 (G00001)



7.5mm Brush Pile Part No. PB065
FPG (G00136)



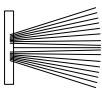
Wedge Gasket Part No. W474
(G00040)



Closing Gasket Part No.
AF032 (G00114)

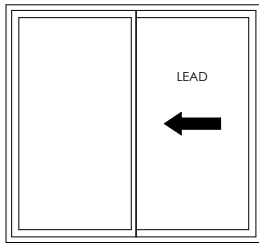


9mm Brush Pile
Part No. 1060393010025 (G00142)

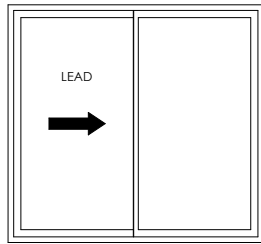


All Configurations

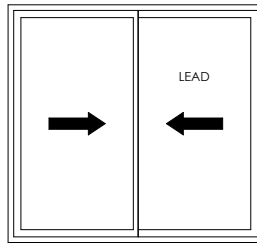
2 door configurations



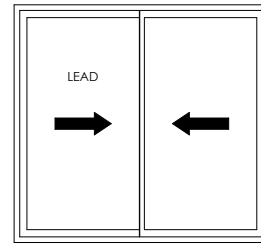
OX (1 fixed, 1 sliding)



XO (1 sliding, 1 fixed)

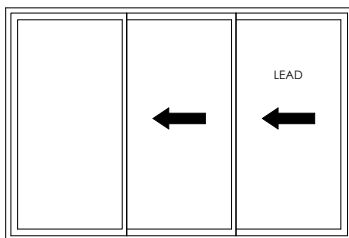


XX (2 sliding)

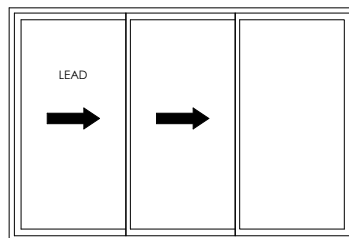


XX (2 sliding)

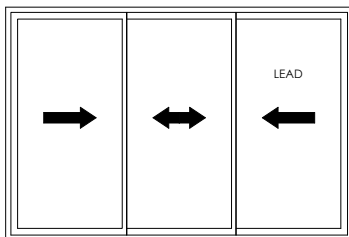
3 door configurations



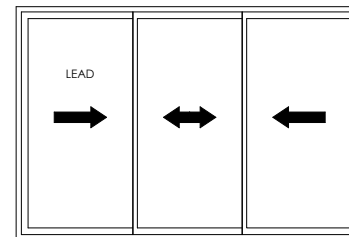
OXX (1 fixed, 2 sliding)



XXO (2 sliding, 1 fixed)



XXX (3 sliding)



XXX (3 sliding)

Installation Guide

Preparation

1. Check all components have been delivered
2. Check opening sizes are correct to ordered size
3. Check the substrate is plumb, level and flat
4. The cill/ track must be supported across its depth to prevent twisting when the weight of the door is applied

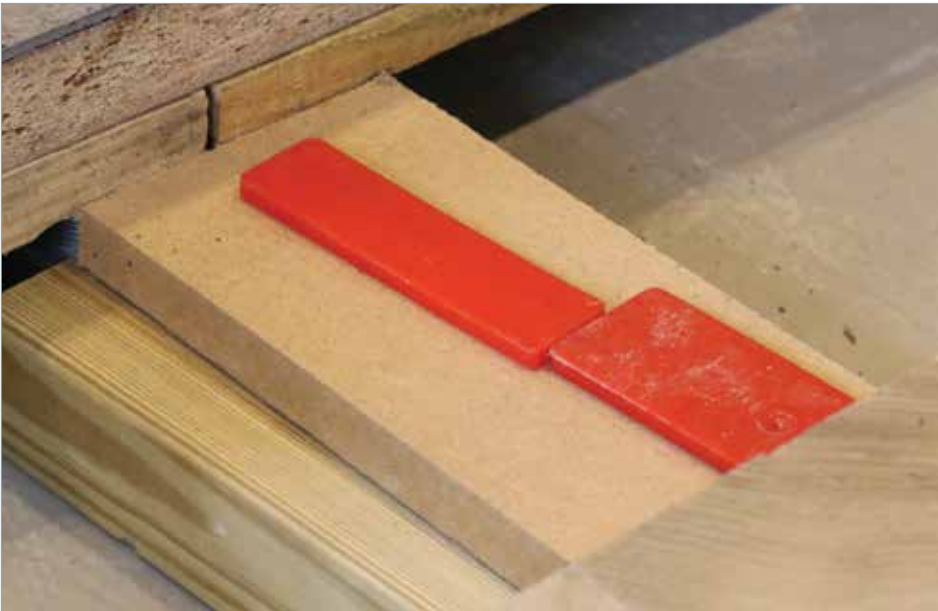


FIG 1

Frame Assembly

1. Lay out the frame components (as labelled) in your work area
2. Insert the alignment chevrons. Location – directly beneath brush gasket position
3. Apply sealant to the ends of the bottom track and attach the jambs
4. Align corners using the chevrons and then tighten using the 4mm allen key, making sure the joint is fully together. Once the corners are fully attached, fill the cleat locating and the screw holes with silicone (particularly at bottom track) (FIG3)
5. Wipe off the excess sealant
6. Attach the head to the jambs using the same process as described in points 2-5 above



FIG 2



FIG 3

Frame Install

1. Ensure that the bottom track/ cill is set flat and level and is supported along the whole length, making sure this is packed no more than every 500mm
2. If using a drip bar, fix and seal into position prior to installation into the opening, sealing along the bottom before fixing
3. Offer the frame into the opening. Pack down above the top 2 corners to hold the frame in place (FIG 4)
- b. Check bottom track for level and make adjustments if necessary (FIG 5)
4. Jambs must be plumb and straight – pack as necessary when fixing to avoid bowing or twisting (FIG 6)
5. Using suitable frame fixings, secure the bottom track and both jambs into position. **NB:** *All fixings through the bottom track must be filled with an all-weather sealant before fixing*
6. Check the frame for square and adjust as necessary



FIG 4



FIG 5



FIG 6

Sash Install

1. If having a fixed sash, ensure the supplied sash packers are installed prior to installing the sashes

2. Insert the sash into the top track as far as possible (FIG 7)

b. Swing the bottom in and lower, so that the wheels of the roller engage on to its runner (FIG 8)

3. Repeat for all sashes

NB: *It may be necessary to lift the top track slightly to allow the bottom of the sashes to cross the runner*

4. If applicable, locate the fixed sash into place and secure using the screws provided

5. Ensure all sashes are running smoothly

6. Ensure that sashes are plumb, level and locking in line and working (FIG 9)

7. Small adjustments can be made using the adjustment screws on the roller using a PH2 long screwdriver. Adjustment is located in the hole at the bottom

8. The top track can now be fully secured. Care should be taken to ensure it is not bowed or twisted and is level along the entire length



FIG 7



FIG 8



FIG 9



FIG 10

Glazing

1. Start with the outside sash and work inwards
2. 4mm glazing packers should be positioned directly above each roller
3. Secure a 4mm packer in the glazing chamber and install the bead on the side of the sash behind the adjoining sash interlocker
4. Lift glass into position. Pack appropriately, making sure the sash remains square
5. Insert a short length of wedge gasket into the previously installed bead to make sure it remains in position
6. Install the remaining beads and insert the wedge gasket along all four sides
7. Repeat the steps above until all glass units have been installed

Finishing

1. Insert cover trims into jamb and track (if applicable)
2. Insert end caps into prepped holes on the interlock (inside and out) and install the supplied screws. The small brush strip fits to the back of the cap before fixing
3. Fix handles into position (FIG 11)
4. Insert the shoot bolt keeps into the top and bottom track and insert the provided screw into the slotted hole. Check the sash locks into place smoothly and the side to side movement is kept to a minimum. Once adjustment is complete, install the remaining screws
5. With the doors closed, mark the track (non-permanent mark) 150mm in from each side of each sash. Slide open the door and fix the anti-lift blocks into position, inline with the previously made marks
6. Open the locking sash to the fully open position (being careful to allow space for the operators fingers). Locate the door stops on the bottom and top of the sash and fix into place using the supplied screws (FIG12 & FIG 13)



FIG 11



FIG 12



FIG 13

Accreditations...

At Origin, we pride ourselves on providing best quality products backed by best levels of service and efficiency. Put simply, our aim is to continuously learn, evolve and improve.

We are well known for having rigorously high standards in everything that we do. We're also known for innovation, but we never want to settle: if there's a way that we could do something better, we will find it.

This ethos has been instilled throughout Origin. Whether it's a process, product offering or even the company's sustainability, we have created a culture that encourages continuous improvement.

To demonstrate our commitment and as a way of measuring our performance, we work towards gaining certain prestigious accreditations. Our achievements show a strong moral and ethical intent in how we operate and how we try to do things the best way, not because we are told to do so, but because we think it is the right thing to do.

We'll run through some of these now.

ISO 9001 – Quality Management...

ISO 9001 is an international standard that assesses a company's quality management system. Having first achieved it in 2013, the fact that we still are certified means that we have a track record of consistently providing products and services that meet both customer and regulatory requirements.

It's something that we take very seriously and its influence is integrated into every process. Key areas of this include:

Product quality – To ensure a product's overall manufacture is flawless, we have checks in place to guarantee you the best quality. A few examples are:

- Supply chain – an inspection at the point of delivery and before going into manufacturing. If anything is spotted, it's documented and raised with the supplier.
- Production – there are quality checks at every station, not only to look over the previous person's work, but to review the quality of the overall build.
- Equipment – a robust maintenance schedule for machinery and equipment ensures consistency.
- Pre-delivery – before it is packaged and loaded ready for delivery, there's another thorough check to ensure nothing's happened whilst being moved from station to station.
- Feedback – as part of our mission to always innovate, whether it's from internal or external stakeholders, feedback is imperative. We are very proactive at bringing this type of information back into the business and learning, as it gives us an opportunity to improve.

Accreditations

- Training and development for our employees – meaning we're better at understanding the good, the bad, and what we can do better.

Secured by Design...

Secured by Design (SBD) is a national, police-backed standard, associated with security and levels of performance for weather, operation and quality on domestic properties. The flagship UK police initiative was originally introduced to help 'design out' crime through the use of high-quality, innovative products and market-leading processes.

It recognises that our doors and windows have not only been tested to the required security standards, but that they also adhere to the rigorous test standards required by the police.

This independent certification involves initial testing of the products and regular re-tests, as well as inspections of our manufacturing and production facilities, to ensure the correct processes are maintained constantly over time, providing more secure and reliable products.

In order to be able to apply, we first needed to achieve:

1. PAS 24 (Enhanced Security)
2. BS EN 6375 Part 1 (Weathertightness)
3. BS EN 6375 Part 2 (Operational and Strength Characteristics)
4. BS EN 6375 Part 3 (Basic Security)
5. ISO 9001 (Quality Management)

We're proud to say that our products passed every one and SBD, so you can feel secure by choosing Origin.

PAS 24...

This is your guarantee that the door sets and windows that we manufacture deliver the right level of security for the buildings they are intended to be part of.

Like most British Standards, PAS 24 is a minimum standard, and it is either a pass or fail test. There isn't a performance scale for those that are more or less secure, so some of the products that pass will be stronger than the minimum requirement. That's why we have become Secured by Design accredited. Because it's a voluntary scheme, we feel it demonstrates our commitment to the security and overall performance of our products.

ISO 14001 – Environmental Management...

Now more than ever, we need to be aware of the impact our operations may have on our environment; the legal obligations we must adhere to, and ensuring we are doing things the right way.

The internationally renowned ISO 14001 accreditation measures the environmental management system that we have in place. It's a subject that's very close to our hearts, which is why working towards this standard was an easy decision.

We care about the resources we use for our products – where they come from and where they end up. To add to this, we aim to be zero waste to landfill and have already put into place many positive changes to make this happen. We want our customers to buy from us with a clear conscience and feel that ISO 14001 can prove that Origin is taking responsibility, acting ethically, legally and exercising best practice in all that we do. Our environmental management system covers:

- Waste management and energy targets – to reduce our consumption and impact on the environment
Helpful hints, tips and reminders are prompted to all staff regularly, so that they can join us in our goal and see how small changes to their work practices can have a big impact.
- Product design and lifecycle – recyclability and sustainability are a design priority for us.
- Supply chain – choosing suppliers that are aligned with our ethos and vision. This is applicable not only when bringing on new suppliers, but also working with existing ones to better their carbon footprint – whether that's minimising packaging, reusing or even our drivers picking up the materials on their routes, rather than a supplier sending their own fleet, we are constantly reviewing how we can improve.



Contact

Accounts

t 08448 802 371 or 01494 416 895 **e** Finance@origin-global.com

Marketing

t 08448 802 374 or 01494 416 897 **e** Marketing@origin-global.com

Sales Operations

t 0808 168 5816 or 01494 686 868 **e** OrdersNorth@origin-global.com
e OrdersSouth@origin-global.com

Solutions

t 08448 802 373 or 01494 416 896 **e** Solutions@origin-global.com

Fleet and Logistics

t 08448 802 378 or 01494 416 898 **e** Logistics@origin-global.com