

ALUK[®]
INFINIUM

A MODERN
MASTERPIECE

FENSA
Registered Company



Glass & Glazing Federation Member

Secured by Design



Official Police Security Initiative





INFINIUM

A MODERN MASTERPIECE

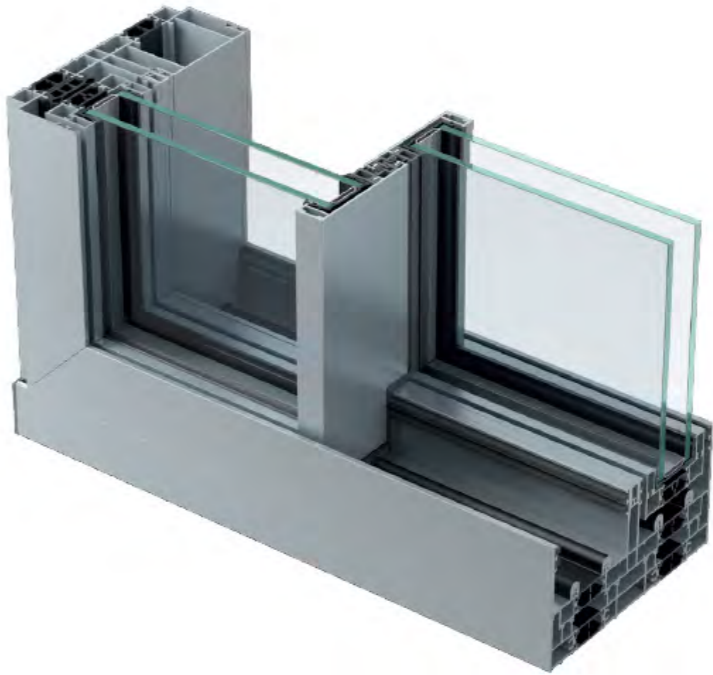
A design which impresses from every angle.
The new AluK sliding door system Infinium allows for wide panoramic views with natural daylight and offers greater comfort. Its high levels of thermal and acoustic insulation combined with its wide range of configurations will satisfy any architectural requirements.

DESIGN FEATURES

- Fully concealed outer-frame
- 21mm central interlock
- Inline sliding door
- Holds up to 400kg panel weight
- One or more opening panels with large width dimensions up to 3000mm (W) and height dimensions up to 3500mm

OPTIONS

- Available in double or triple track
- Glazing options of 38mm - 52mm
- Floating corner post option for larger opening space
- Single or dual colour options, also available in anodised or powder coating finishes
- Available in a range of configurations
- Double or triple glazing solutions available on the same outerframe



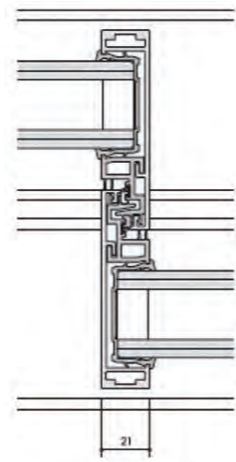
Size Limits

Max Sash Weight	400kg
Max Sash Dimension	3000mm (W) 3500mm (H)

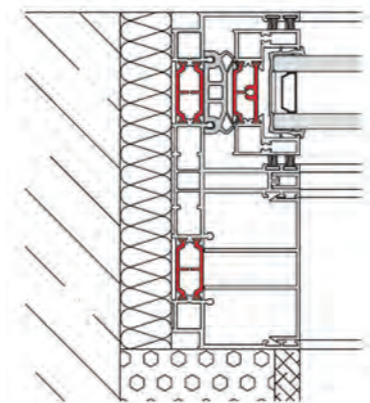
FRAME DEPTH	175mm and 262mm
GLAZING THICKNESS	38mm 52mm
DUAL COLOUR OPTION	✓
MINIMUM SIGHTLINE	21mm

PERFORMANCE	
U-VALUE (DOUBLE GLAZING)	From 1.3 W/m²K
U-VALUE (TRIPLE GLAZING)	< 1.0 W/m²K
AIR TIGHTNESS	Class 8a (600 Pa)
WATER TIGHTNESS	Class 8a (450 Pa)
WIND LOAD	Class C3 (1200 Pa, up to 160km/h)

Interlock



Jamb Detail



Sill Detail

